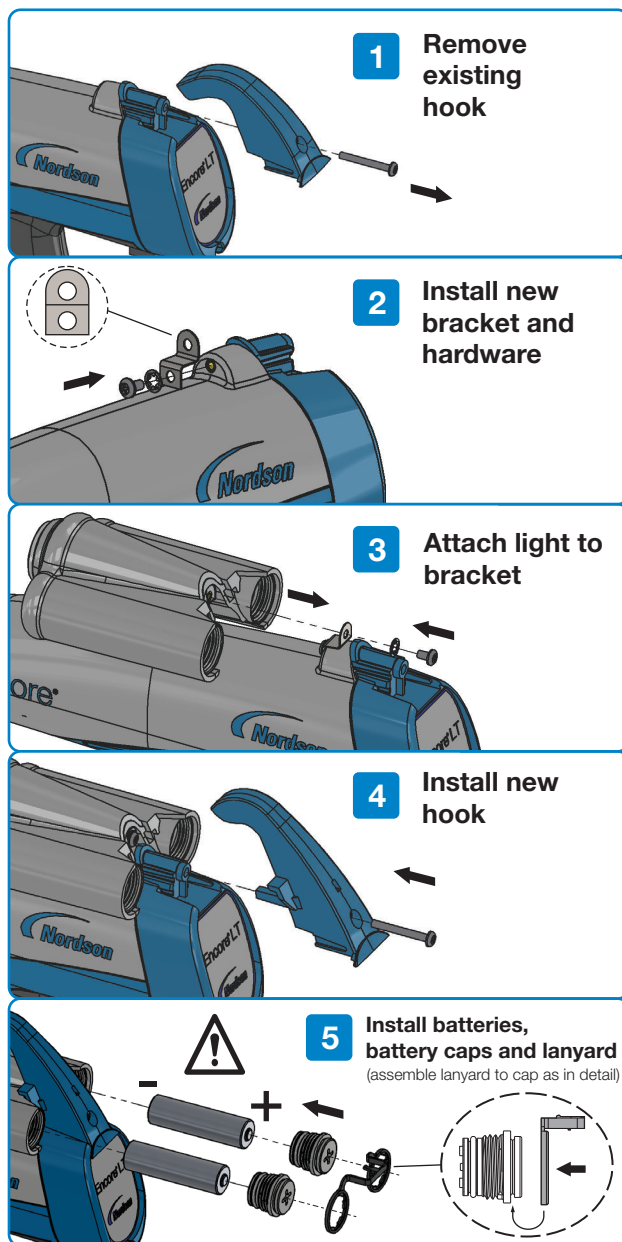


## Installation



For Assistance, Call Customer Service at 800-433-9319

## Safety



**WARNING:** LED Radiation (RG-2)  
Do not stare into the beam of light, may be harmful to eyes.

Read and follow any safety instructions stated in this document. Failure to do so may result in damage to equipment or injury to operator. Task and equipment specific warnings, cautions, and instructions are included in this document where appropriate.

Refer to the **Safety Section** of the manual for the Encore® Manual Powder Spray System or Spray Gun for additional safety information. These can be found by scanning the QR code above or going to [emanuals.nordson.com](http://emanuals.nordson.com)

## Battery Installation/Removal



**WARNING:** Do not open to change batteries in powder booth or other hazardous areas.

Use only 1.5 V, size “AA”, IEC-LR6 Alkaline batteries. Replace all batteries at the same time.

Do not mix batteries from different manufacturers, new with used, or different specifications. Improper battery installation can cause batteries to explode or leak and cause personal injury. Observe the polarity during installation (see *Installation* step 5 for reference). Do not recharge primary batteries.

Sheet 1 of 2



## Part Number 1614474-01 Instruction Sheet

©2018 Nordson Corporation  
Original Copyright Date: 2018

Issued: 09/2018

## Operations

### Application Mode - 33 lumens, max

Squeeze the trigger when ready to spray powder. nLighten will automatically turn on and remain on while spraying powder.

LED output will track the KV output of the multiplier.

### Inspection Mode - 65 lumens

Release the trigger when ready to stop spraying powder. nLighten will remain on for fifteen seconds and will automatically turn off. If more inspection time is needed, quickly press and release the trigger to receive an additional fifteen seconds of inspection time.

1. Remove spray gun from a hazardous area.
2. Clean the assembly of any coating material before changing the batteries.
3. Unscrew the battery caps with a flat blade screwdriver.
4. Remove old batteries and dispose of them properly.
5. Install the new batteries, inserting the negative terminal into the housing first (see *Installation* illustration, step 5).
6. Install and tighten the battery caps until the cap bottoms against the housing. Do not over-tighten.

### Battery Disposal

Dispose of all spent batteries according to all local rules and regulations.

Encore, Nordson, and the Nordson logo are registered trademarks of the Nordson Corporation. nLighten is a trademark of Nordson Corporation.



## Specifications

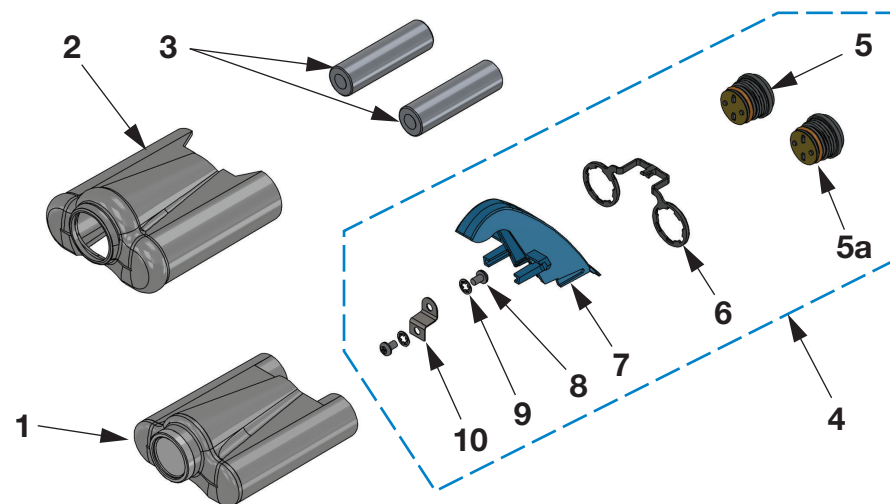
<b>Primary Cell Type:</b>	Only use (2) 1.5 V "AA" Alkaline (ANSI-15A, IEC-LR6) batteries
<b>Recommended Cell Manufacturers:</b>	Energizer EN91 Alkaline
<b>Ambient Temperature Rating:</b>	+15 to +40° C (59 to 104° F)
<b>Maximum Relative Humidity</b>	95% non-Condensing
<b>Hazardous Location Rating for Light:</b>	For Electrostatic Finishing Applications using Class II Spray Materials
<b>Dust Ingress Protection:</b>	IP6X
<b>Approvals:</b>	cFMus, FM18ATEX00061X
<b>Specific Conditions of Use:</b> <ul style="list-style-type: none"> <li>The nLighten™ LED Kit shall only be used over the ambient temperature range of +15° C to +40° C with the manufacturer's separately ATEX certified manual electrostatic powder applicators.</li> <li>The equipment can only be used in areas of low impact risk.</li> <li>Caution should be taken when cleaning plastic surfaces on the nLighten LED. There is a potential for static electricity buildup on these components.</li> <li>For use with Encore LT manual applicator FM11ATEX0056X, and Encore XT/HD applicators FM14ATEX0051X</li> </ul>	

## Troubleshooting

ISSUE	RESOLUTION
<b>No light when trigger is released</b>	Replace batteries.
	Verify proper battery orientation.
<b>Low light when trigger is depressed</b>	Housing not in alignment with spray gun body - realign housing to spray gun body.
	Lens cover obstructed with powder - clean lens with isopropyl alcohol.
<b>No light when trigger is depressed</b>	Housing not in alignment with spray gun body - Realign housing to spray gun body.
	Damage to internal circuitry - replace unit.

## Parts

**NOTE:** There are no serviceable components within the housing assembly.



ITEM	PART NO.	DESCRIPTION	QTY.
	1611977	KIT, nLighten, LED, Encore	1
<b>1</b>	-----	● Housing Assembly	1
<b>2</b>	1613361	● Cover, housing, nLighten, Encore	1
<b>3</b>	-----	● Battery	2
<b>4</b>	1614040	KIT, service, nLighten	1
<b>5</b>	-----	● Cap Assembly, battery, nLighten, Encore	2
<b>5a</b>	-----	● ● O-ring, silicone, 13.5 mm ID x 1.5 mm	2
<b>6</b>	-----	● Lanyard, nLighten, Encore	1
<b>7</b>	-----	● Hook, nLighten, Encore	1
<b>8</b>	-----	● Screw, pan head, M3 x 5 mm, zinc	2
<b>9</b>	-----	● Lock Washer, M3 internal tooth, zinc	2
<b>10</b>	-----	● Clip, spring, mount, LED, Encore	1

# EU DECLARATION of CONFORMITY

## Product: Encore nLighten LED Kit

This Declaration is issued under the sole responsibility of the manufacture.

**Models:** Encore nLighten

**Description:** The LED light kit is for use with Nordson Encore Manual Spray Applicators

### Applicable Directives:

2014/30/EU - EMC Directive

2014/34/EU - ATEX Directive

### Standard Used for Compliance:

EN/ISO12100 (2010)	EN60204-1 (2016)	EN61000-6-3 (2007)	FM 7260 (2018)
EN60079-0 (2018)	EN50050-2 (2013)	EN61000-6-2 (2005)	
EN60079-31 (2014)	EN60079-28 (2015)	EN55011 (2009)	

### Ratings:

-Ambient Temperature: +15°C to +40°C

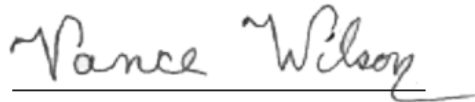
-Ex II 2 D

### ATEX Product Certificate:

-FM18ATEX0061X (Norwood, Mass. USA)

### ATEX Quality System Certificate:

-1180 Baseefa (Buxton, Derbyshire, UK)

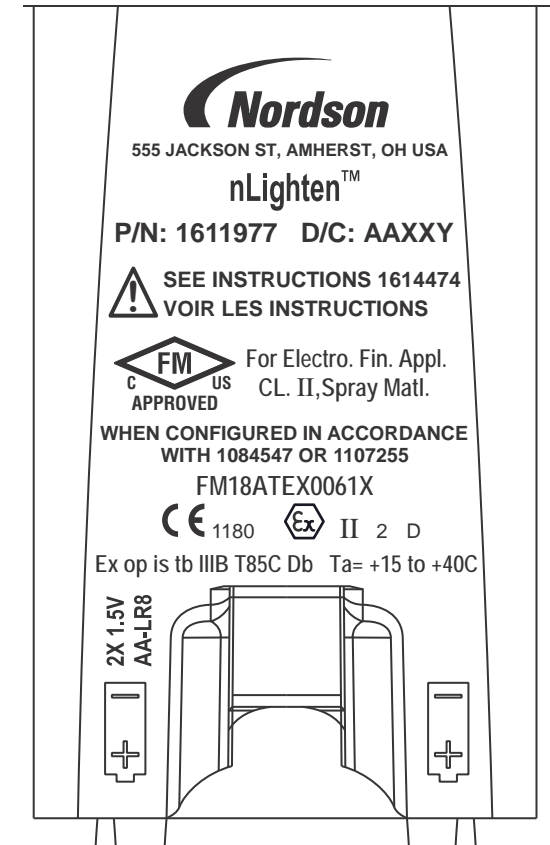


Vance Wilson  
Engineering Manager  
Industrial Coating Systems  
Amherst, Ohio, USA

Date: 24Aug2018



Nordson Corporation • Westlake, Ohio



**Nordson Authorized Representative in the EU**  
**Person authorized to compile the relevant technical documentation. Contact:** Operations Manager  
Industrial Coating Systems, Nordson Deutschland GmbH,  
Heinrich-Hertz-Straße 42-44, D-40699 Erkath

DOC14046-03