

# NEW!

# DEVILBISS

VTX HVLP Spray Gun

## VTX HVLP Spray Gun

- Reduced mottling with dye and toner stains
- 99% Color repeatability of most NGR stains
- Uniform coverage of top coats
- 50% less trigger pull

Working in conjunction with coating companies and furniture manufacturers, DeVilbiss atomization engineers have designed an innovative solution to reduce the incidence of mottling, a cloudy or blotchy finish appearance typically seen when spraying various non-grain-raising dye, toner stains, and semi wipes with standard HVLP guns. The gun also achieves outstanding results when applying light to medium topcoats with a viscosity between 18 and 28 seconds on a No. 2 Zahn.

The new DeVilbiss VTX spray gun uses a unique and patented 3-stage atomization technology to overcome the effects of mottling. Independent testing has confirmed the VTX provides:

- Highly consistent, uniform spray patterns
- Enhanced process control capability
- Improved finish quality and appearance
- Additional operator comfort with a 50% reduction in dynamic trigger pull.

The VTX is designed to handle both thin and thick wood finishing stains and is the first DeVilbiss product to use Jet Impingement Atomization (JIA) technology. In this process, the stain is:

1) hydraulically preatomized in an internal impingement orifice, creating a vortex; 2) a hollow fluid bulb is then formed as a result of the vortex; and 3) the stain is finely atomized with a 2000 air cap and baffle combination. These steps ensure highly consistent and uniform spray patterns. The VTX design also provides maximum transfer efficiency and complies with rules issued by SCAQMD and other air quality authorities.

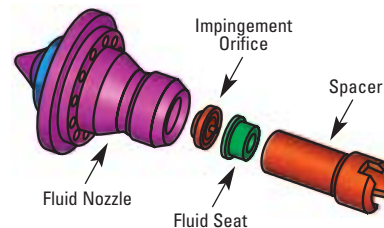
### Ordering Information

The VTX spray gun set up has two fluid needle and nozzle set-ups for these applications, and is equipped with an in-line 100 mesh mini-strainer to ensure a clean supply of material to the internal impingement chamber.

**Model No. VTX-18** Use with flow rates at 15 oz./min. or less  
**VTX-30** Use with flow rates from 15 to 30 oz./min.



### Fluid Nozzle Assembly:



### Technical Specifications:

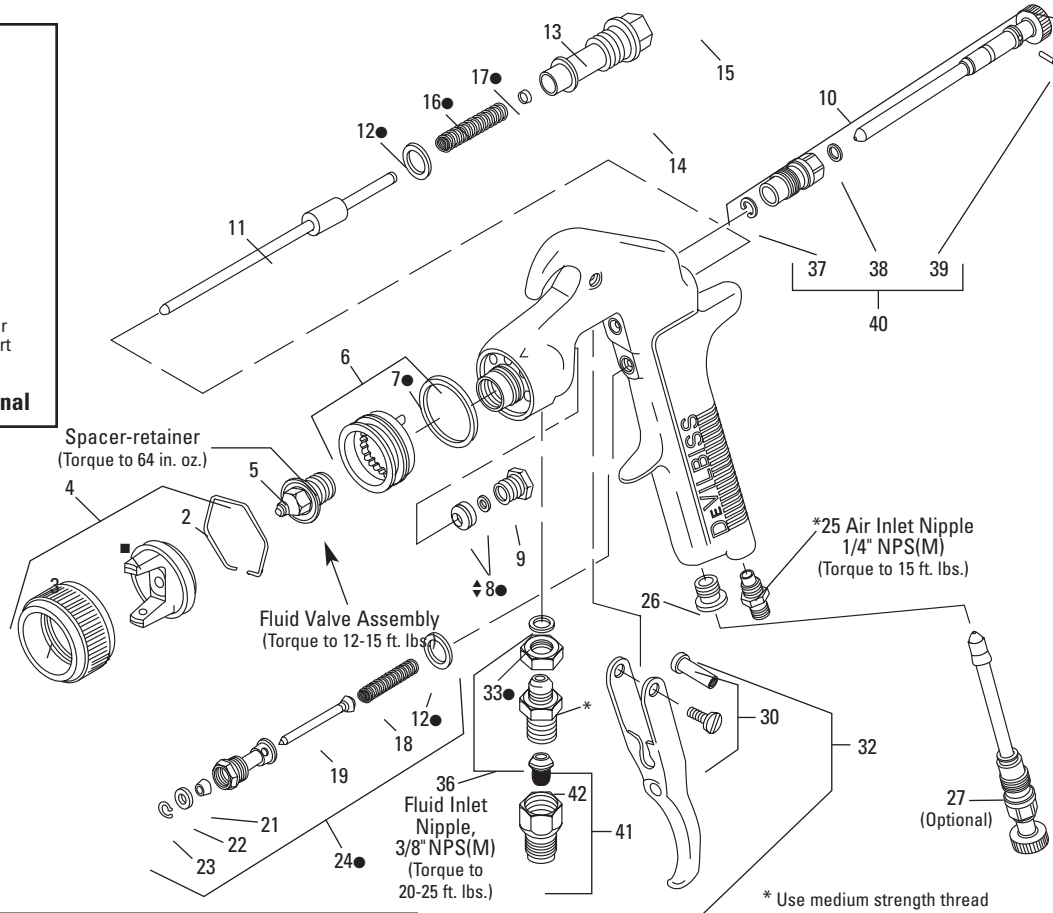
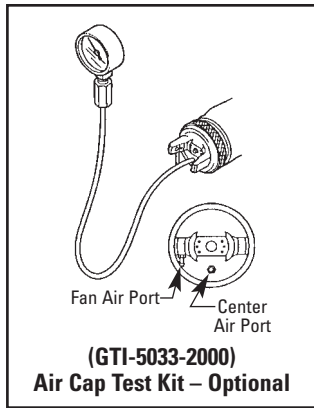
Maximum Air Pressure:	100 psi
For HVLP Compliance:	30 psi static, inlet pressure delivers 10 psi air cap pressure at 16 cfm
Maximum Fluid Inlet Pressure:	60 psi
Gun Body:	Drop Forged Aluminum
Wetted Parts:	Stainless Steel, Delrin
Air Inlet Size:	1/4" NPS(M)
Fluid Inlet Size:	3/8" NPS(M)
Weight:	21.6 oz (610 g)
Feed Type:	Pressure
Service Bulletin:	SB-2-282
Gun Repair Kit:	KK-5085

VTX HVLP Spray Gun

Patent pending  
© 2004 ITW Industrial Finishing

I-2183R-2

# VTX HVLP Spray Gun



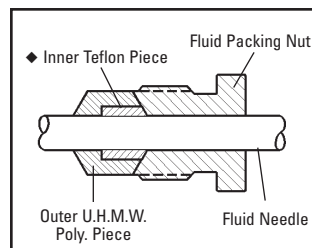
Customer Service 1.800.992.4657

Ref. No.	Model No.	Description	Ind. Parts Required
2	JGA-156-K10	Spring Clip (Kit of 10)	1
3	GTI-3	Air Cap Retaining Ring	1
4	See Chart 1	Air Cap and Retaining Ring	1
5	See Chart 2	Fluid Nozzle Assembly	1
6	GTI-425	Baffle Assembly	1
*7	GTI-33-K5	Baffle Seal (Kit of 5)	1
*8	JGV-463-K3	Needle Packing Assembly (Kit of 3)	1
9	34411-122-K10	Fluid Needle Packing Nut (Kit of 10)	1
10	GTI-405	Spreader Valve	1
11	VTX-9	Fluid Needle	1
*12	JGS-72-K10	Gasket Kit (Teflon) (Kit of 10)	2
13	JGA-17	Gun Body Bushing	1
+14	VTX-10	Gun Body Bushing (Optional)	1
15	GTI-4	Adjusting Screw	1
*16	MSA-4-K10	Spring (Kit of 10)	1
*17	—	Spring Pad	1
*24	JGS-449-1	Air Valve Assembly	1
25	MSA-3	Air Inlet Nipple 1/4" NPS(M)	1
26	JGA-132	Plug	1
27	GTI-415	Air Adjusting Valve (optional)	1
30	JGS-478	Stud and Screw Kit (includes 3 studs & 5 screws)	1
32	JGS-477-1	Trigger Stud, Screw Kit	1
*33	—	Fluid Inlet Gasket	1
36	JGA-4044	Fluid Inlet, Gasket, Nut Kit	1
40	GTI-428-K5	Clip, Seal & Pin Kit (5 each)	1
41	PLH-MF-6-100	Mini-strainer (100 mesh)	1
42	PLH-MF-C-100	Element (100 mesh)	1

\* KK-5085 Gun Repair Kit includes a quantity of necessary parts. This kit should be kept on hand for service convenience. Suffixes -K5, -K10 designate kits of multiple parts.

+ VTX-10 Gun Body Bushing is used in applications where the feathering control is not required. Order separately.

## JGV-463 ◆ Packing Assembly



◆ Detail Ref. No 8 – Two piece packing  
◆ Tapered edge faces out towards packing nut.

Chart 2

Fluid Nozzle Assembly	Orifice Size	Recommended Flows
VTX-2	.018	15 oz/min or less
VTX-13	.030	From 15-25 oz/min

## ■ Chart 1 Air Cap & Baffle Combinations

No. Stamped on Parts		Set		CFM@ Cap Pressure				
Air Cap Part No.	Baffle	Ref. No. 4 Air Cap	Ref. No. 6 Baffle Assy.	2 psi	4 psi	6 psi	8 psi	10 psi
2000	(Not Stamped)	GTI-407-2000	GTI-425	7.3	10.4	12.8	14.7	16



ITW Industrial Finishing  
Devilbiss  
195 Internationale Blvd.  
Glendale Heights, IL 60139  
630-237-5000  
Fax 630-237-5011  
www.devilbiss.com

