

RHINO
Automatic Spray Gun



A54-73 9/04

NEW!



**High performance
ceramic and porcelain enamel coating
automatic spray gun**

Conventional or HVLP compliant

RHINO Automatic Spray Gun



The Binks Rhino is an automatic spray gun designed for use in extreme environments spraying porcelain enamel and ceramic glaze materials. It is a completely sealed spray gun, intended for use in "wash down" environments. It is exceptionally rugged in construction and is built to stand up under continuous hard use.

Features

- Conventional and HVLP Design
- Removable gun mounting bracket attachment (patent pending)
- "One unit" needle packing fluid cartridge assembly
- Rugged "Rhino Skin" coated and forged durable gun body assembly (wash down proof)
- Angled fluid inlet (patent pending)
- Low profile "Rhino Skin" coated air cap design
- Binks "Perma Wear" fluid nozzle and needle assembly
- Totally sealed piston assembly (patent pending)
- Large air passages

Benefits

- Multi purpose application – transfer efficiency
- Gun position when changing guns remains unchanged (saves down time)
- Time saving in fluid packing replacement
- Wash down ability without internal component contamination
- Smooth fluid flow into the fluid nozzle (no dead spots in fluid inlet)
- Less possibility for air cap to accumulate overspray
- Long periods between changing of fluid nozzles and needles
- No piston seal contamination issues to deal with
- No air flow restrictions for high and low flow applications

Specifications

Maximum Fluid Pressure:	100 psi/6.9 bar
Maximum Atomizing Air Pressure:	120 psi/8.3 bar
Maximum Cylinder Air Pressure:	120 psi/8.3 bar
Minimum Cylinder Air Pressure:	40 psi/2.8 bar
Maximum Air Pressure for HVLP Compliance:	Consult Air Cap Data
Gun Body:	Forged Aluminum
Fluid Path:	Stainless Steel
Fluid Inlet Size:	3/8" NPS(m)
Atomizing Air Inlet Size:	1/4" NPS(m)
Cylinder Air Inlet Size:	1/4" NPS(m)
Gun Weight:	2.6 lbs/1.2 kg
Mounting Hole:	1/2"

Available Models

7035-1000-1	CONVENTIONAL with .110" (2.8 mm) Fluid Nozzle
7035-2000-1	CONVENTIONAL with .086" (2.2 mm) Fluid Nozzle
7035-3000-1	CONVENTIONAL with .070" (1.8 mm) Fluid Nozzle
7036-1000-2	HVLP with .110" (2.8 mm) Fluid Nozzle
7036-2000-2	HVLP with .086" (2.2 mm) Fluid Nozzle
7036-3000-2	HVLP with .070" (1.8 mm) Fluid Nozzle

Gun Combinations Available as Standard

AIR CAP	AIR CAP PART NO.	TYPE	BAFFLE	BAFFLE PART NO.	FLUID NOZZLE	FLUID NOZZLE PART NO.	ORIFICE SIZE	FLUID NEEDLE	FLUID NEEDLE PART NO.	CFM @ 30 PSI INLET	CFM @ 50 PSI INLET	CFM @ 70 PSI INLET	PATTERN WIDTH @ 12"
RHINO #1 AIR CAP	46-4615	Conv.	#1 BAFFLE	54-5505	RF110-1	45-6809	.110 in/2.8 mm	RN110-1	47-6809	6.0	7.2	8.2	12"
RHINO #1 AIR CAP	46-4615	Conv.	#1 BAFFLE	54-5505	RF86-1	45-6810	0.086/2.2 mm	RN86-1	47-6810	7.5	9.0	10.3	12"
RHINO #1 AIR CAP	46-4615	Conv.	#1 BAFFLE	54-5505	RF70-1	45-6811	0.070/1.8 mm	RN70-1	47-6811	7.2	8.9	10.5	12"

AIR CAP	AIR CAP PART NO.	TYPE	BAFFLE	BAFFLE PART NO.	FLUID NOZZLE	FLUID NOZZLE PART NO.	ORIFICE SIZE	FLUID NEEDLE	FLUID NEEDLE PART NO.	CFM @ 10 PSI AIR CAP PRESSURE	MAX INLET PRESSURE FOR HVLP COMPLIANCE	PATTERN WIDTH @ 12"
RHINO #2 AIR CAP	46-4616	HVLP	#2 BAFFLE	54-5539	RF110-1	45-6809	.110 in/2.8 mm	RN110-1	47-6809	7.9	26	11"
RHINO #2 AIR CAP	46-4616	HVLP	#2 BAFFLE	54-5539	RF86-1	45-6810	0.086/2.2 mm	RN86-1	47-6810	9.5	36	11"
RHINO #2 AIR CAP	46-4616	HVLP	#2 BAFFLE	54-5539	RF70-1	45-6811	0.070/1.8 mm	RN70-1	47-6811	9.0	36	11"

Kits

Rebuild Kit (54-5540)

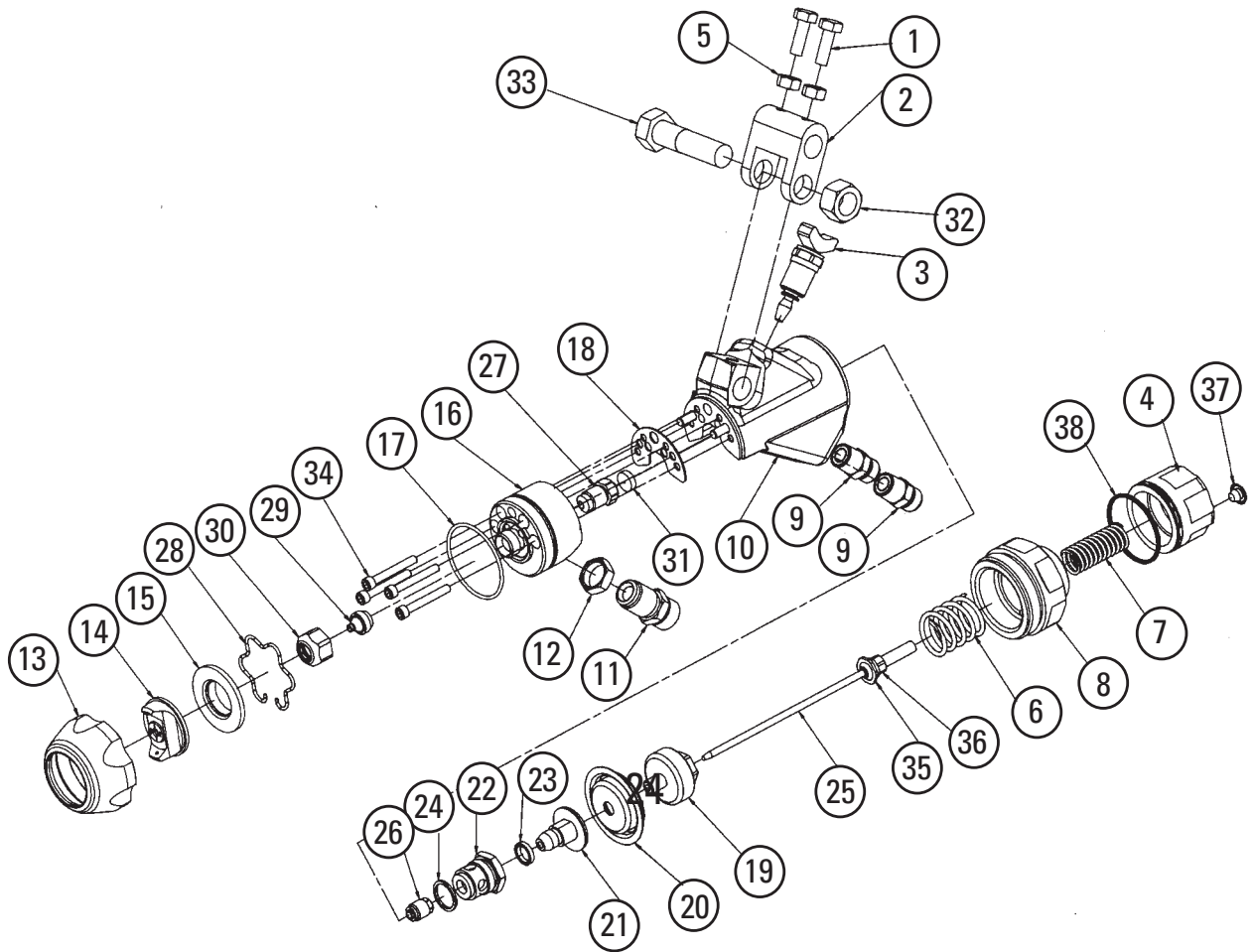
ITEM NO.	PART NO.	DESCRIPTION	QTY.
17	20-6510	O-Ring	1
18	54-5503	Head Gasket	1
20	54-5531	Diaphragm	1
23	54-5518	U-Cup Seal	1
24	54-5529	Nylon Gasket	1
26	54-5526	Air Packing Cartridge	1
27	54-5511	Fluid Packing Cartridge	1
31	54-5538	Needle Wiper	1
37	54-5522	Umbrella Valve	1
38	20-6747	O-Ring	1

Repair Kit (54-5541)

ITEM NO.	PART NO.	DESCRIPTION	QTY.
20	54-5531	Diaphragm	1
26	54-5526	Air Packing Cartridge	1
27	54-5511	Fluid Packing Cartridge	1
31	54-5538	Needle Wiper	1

RHINO #2 HVLP air cap test Kit (54-5542)

RHINO Automatic Spray Gun



Parts List When ordering, please specify Part No.

ITEM NO.	PART NO.	DESCRIPTION	QTY.	ITEM NO.	PART NO.	DESCRIPTION	QTY.
1	20-6761	1/4-20 x 3/4 Hex Head SS	2	21	54-5530	Valve Piston	1
2	54-5537	Mounting Bracket	1	22	54-5524	Valve Seat	1
3	54-5515	Side Port Assembly	1	23	54-5518+	U-Cup Seal	1
4	54-5536	Needle Adjuster.....	1	24	54-5529+	Nylon Gasket	1
5	20-6234	1/4-20 Nut SS	2	25	Specify	Needle Assembly	1
6	54-5534	Piston Return Spring	1	26	54-5526+*	Air Packing Cartridge.....	1
7	54-5533	Needle Return Spring	1	27	54-5511+*	Fluid Packing Cartridge	1
8	54-5535	End Cap	1	28	54-5507	Air Cap Retaining Clip.....	1
9	54-5525	Air Connection	2	29	Specify	Fluid Nozzle	1
10	54-5504	Gun Body Sub-Assembly	1	30	54-5508	Nozzle Nut	1
11	54-5509	Fluid Inlet Fitting	1	31	54-5538+*	Needle Wiper	1
12	54-5510	Fluid Fitting Locknut.....	1	32	20-2424	1/2-13 Nut SS	1
13	54-5506	Air Cap Retaining Ring	1	33	20-2422	1/2-13 x 2 Hex Head SS	1
14	Specify	Air Cap	1	34	20-6759	#8-32 X 1 1/4 Allen Head SS	4
15	Specify	Baffle	1	35	54-5521	Front Lock Nut	1
16	54-5502	Gun Head	1	36	54-5520	Rearlock Nut	1
17	20-6510+	O-Ring.....	1	37	54-5522+	Umbrella Valve.....	1
18	54-5503+	Head Gasket.....	1	38	20-6747+	O-Ring.....	1
19	54-5532+	Diaphragm Piston	1				
20	54-5531+*	Diaphragm	1				

+ Available as part of Rebuild Kit (54-5540).

* Available as part of Repair Kit (54-5541).

